



Instrument Specialists

133 E Main St, Twin Lakes, WI 53181

Phone: 262-877-3600 info@instrument-specialists.com

Fax: 262-877-3699 www.instrument-specialists.com

ISI TGA 1000/1200/1500

Thermogravimetric Analyzer

Product Introduction

Based in Wisconsin, Instrument Specialists has been shaping the future of thermal analysis since 1992. With a steadfast commitment to innovation and precision, the company has become a trusted partner for professionals seeking advanced yet affordable solutions. At the forefront of the offerings is the Thermogravimetric Analyzer (TGA) Series, a product line that exemplifies cutting-edge design, exceptional performance, and unmatched value.

The TGA Series combines research-grade capabilities with an accessible price point, delivering high-performance thermal analysis tools without compromising on quality. Equipped with advanced high-sensitivity microbalances and compact, state-of-the-art furnaces, these instruments provide unparalleled precision, drastically reduce buoyancy effects, and ensure superior temperature responsiveness.

Renowned for their reliability and versatility, the TGA Series instruments are trusted across a wide range of industries, including plastics, rubber, adhesives, fibers, pharmaceuticals, environmental energy, petrochemicals, and food science. These instruments meet critical customer needs by enabling the characterization and analysis of parameters such as material decomposition temperatures, mass loss percentages, component contents, and residual mass.



Precision

Stability

Ease of Use

Typical Applications

- » Thermal Stability
- » Thermal Pyrolysis
- » Oxidation Reactions
- » Dehydration Process
- » Decomposition Process
- » Kinetics
- » Combustion Process
- » Moisture Content
- » Residue and Ash Content

Product Features

Precision

- The proprietary high-sensitivity microbalance provides a capacity of ± 200 mg with an impressive resolution of up to $0.1 \mu\text{g}$. It delivers outstanding stability and accuracy in data acquisition, ensuring precise weighing for a wide range of sample types.
- The dual PID control logic, combined with the miniature furnace design, significantly enhances the temperature control response speed and accuracy. This ensures precise and stable temperature regulation throughout the experimental process, resulting in excellent repeatability and stability of TGA test results.

Stability

- The balance utilizes a vertically suspended design, offering enhanced stability in measurement signals by minimizing the impact of thermal radiation. This ensures highly reliable experimental data. Furthermore, the vertical suspension structure is easier to maintain and provides a longer service life.
- The compact furnace design optimizes temperature response sensitivity within the furnace while significantly reducing buoyancy effects. This innovation minimizes dynamic curve drift, further enhancing the accuracy and stability of test results.

Ease of Use

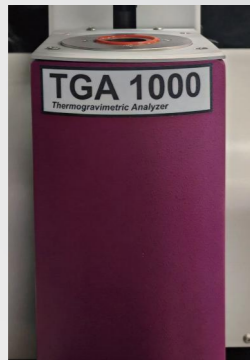
- The software interface is designed with a clean, intuitive user experience and a modular layout, ensuring ease of use and quick learning. Users can effortlessly navigate through tasks such as setting up experimental methods and analyzing results, enabling them to master operations in no time.
- The vertically suspended balance design, combined with the automatic furnace lifting function, enables users to easily place and change samples. Additionally, this design ensures fast stabilization of the sample after placement.

Key Features



Proprietary Microbalance

The proprietary TGA microbalance combines high sensitivity, low drift technology, and thermal insulation design to deliver exceptional weighing accuracy. With a resolution as precise as 0.1 μg , it is ideal for high-precision measurements of trace samples. The low-drift technology minimizes the impact of environmental factors, ensuring stable data even in long-duration experiments, while reducing errors caused by drift. Additionally, the thermal insulation design protects the balance from external temperature fluctuations, maintaining internal temperature stability and ensuring reliable results, even in conditions of rapid temperature change or high heat.



Miniature Furnace

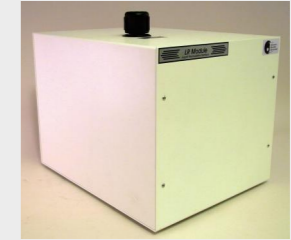
The compact heating furnace is designed to significantly minimize gas buoyancy effects, ensuring that dynamic curve drift in TGA remains under 25 μg without requiring additional blank tests. Additionally, the furnace delivers a rapid temperature response, achieving heating rates of up to 300°C/min, which dramatically shortens experimental time and enhances overall work efficiency.

Precise Temperature Control

The advanced heating technology combined with a dual PID control system ensures precise adherence to the set temperature curve during both heating and cooling processes. With a temperature control accuracy of $\pm 0.1^\circ\text{C}$, this system significantly reduces the influence of temperature fluctuations, delivering highly reliable experimental results.

Wide Temperature Range

Multiple furnace options are available to meet the specific temperature requirements of different materials. With a maximum temperature capability of up to 1500°C, these furnaces are designed to satisfy the rigorous demands of both experimental and industrial applications.



Water Cooling System

The fully automated recirculating bath provides precise and continuous temperature control, which effectively and rapidly reduces the TGA furnace temperature, significantly shortening the experimental time.



Automatic Gas Switching Control

The gas selector supports one-button switching across multiple gases, accommodating up to 4 input ports. The device features an integrated design, consolidating four gas channels into a single module to meet the need for frequent gas switching during different testing processes.



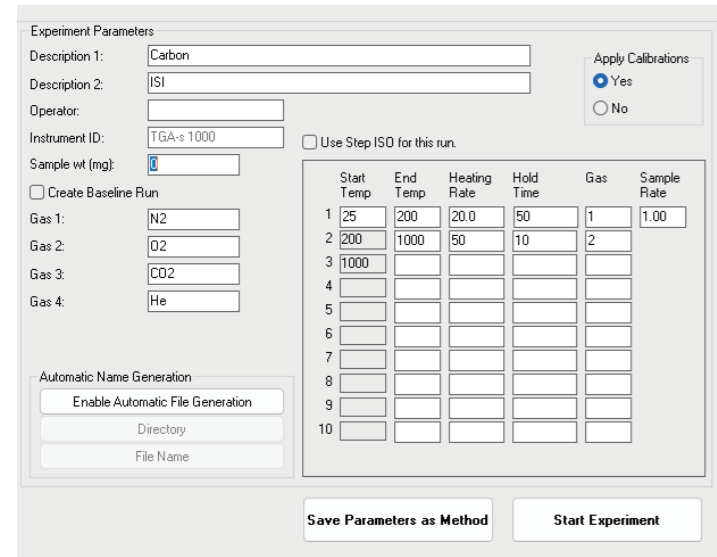
Evolved Gas Analysis

TGA can be combined with other analytical instruments for online monitoring and qualitative analysis of evolved gases, such as mass spectrometers (MS) or Fourier-transform infrared spectrometers (FTIR).

Furnace Auto-Lift System

The instrument is equipped with an automatic furnace lifting system, simplifying experimental operations and preventing equipment damage or safety incidents caused by improper manual handling.

Software Features



Experiment Program Setup Interface

Standard Functions

- 2-point or 6-point mass loss analysis
- Peak temperature analysis
- Weight loss step analysis
- Mass loss initiation point
- Residual mass calculation
- 1st and 2nd derivative analysis
- Data smoothing
- Baseline subtraction

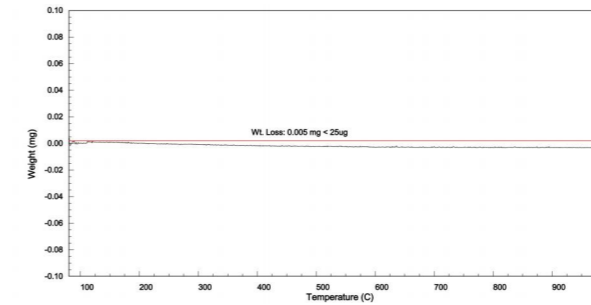
Optional Functions

- High-Resolution thermogravimetric analysis: Enables effective separation of overlapping mass loss regions, improving resolution, and quickly obtaining experimental data over a wide temperature range.

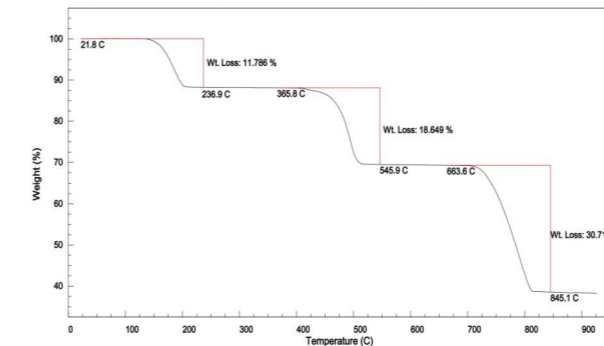
Typical Materials

- Petroleum and Petrochemical Products
- Coal and Other Fuels
- Explosives
- Cosmetics
- Thermoplastic Materials
- Thermosetting Materials
- Rubber
- Coatings
- Elastomers
- Polymers
- Pharmaceuticals
- Food Products
- Catalysts
- Chemicals
- Asphalt
- Ceramics

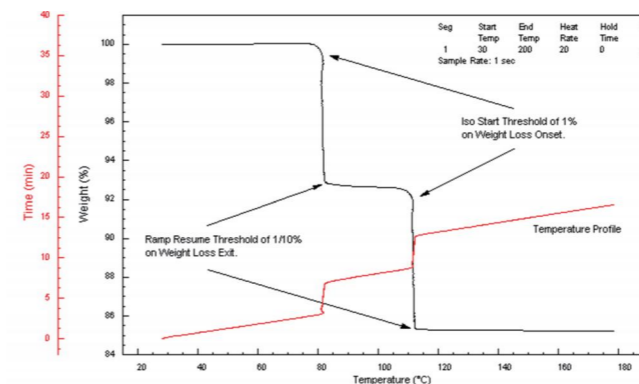
Application Data



In a typical TGA test, the sample mass may increase due to the "buoyancy effect" of the gas. However, the design of the miniature heating furnace ensures that the drift of the dynamic thermogravimetric curve remains below 25 µg, eliminating the need for baseline curve subtraction.



The analysis software enables clear observation of the weight loss ratio and corresponding temperatures at each stage of the process. For instance, the thermogravimetric curve of hydrated calcium oxalate demonstrates three distinct stages. In the first stage, bound water evaporates, producing water vapor and leaving behind calcium oxalate. In the second stage, calcium oxalate decomposes into calcium carbonate and carbon monoxide. Finally, in the third stage, calcium carbonate further breaks down into calcium oxide and carbon dioxide.



The high-resolution TGA technology intelligently adjusts the heating rate in response to the sample's decomposition rate, effectively separating overlapping mass loss regions and enhancing resolution. This enables the rapid collection of experimental data across a wide temperature range. The exceptional resolution achieved with this advanced technology is particularly beneficial for analyzing the mass loss curve in TGA and the first derivative signals (DTG), providing highly detailed and accurate results.

Technical Specifications

Technical Specifications			
Temperature Range	RT-1000°C	RT-1200°C	RT-1500°C
Temperature Accuracy	±0.5°C		
Temperature Precision	±0.1°C		
Heating Rate	0.1-300°C/min	0.1-60°C/min	0.1-60°C/min
Cooling Method	Water Cooling		
Balance Resolution	0.1 µg		
Measuring Range	±200 mg		
Dynamic Baseline Drift	< 25 µg (No blank background subtraction)		
Isothermal Curve Drift	< 5 µg/h		
Curve Repeatability	< 10 µg		
Weight	44 lbs		
Instrument Dimensions	16.3 in (W) × 14 in (D) × 16.6 in (H)		
	Option		
Gas Controller	4 Channels Automatic Switching		
Evolved Gas Dimensions	MS, FTIR, etc.		